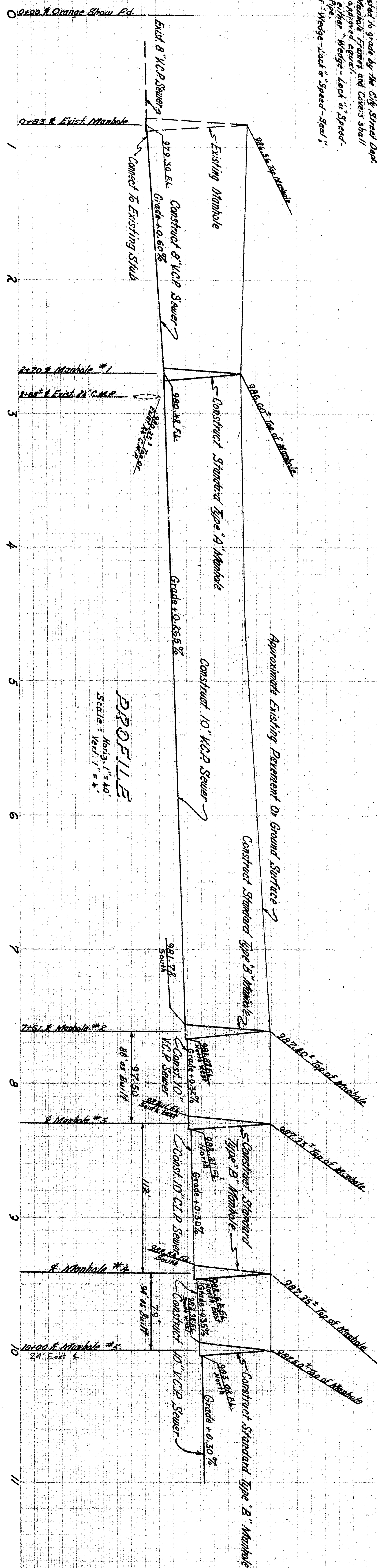


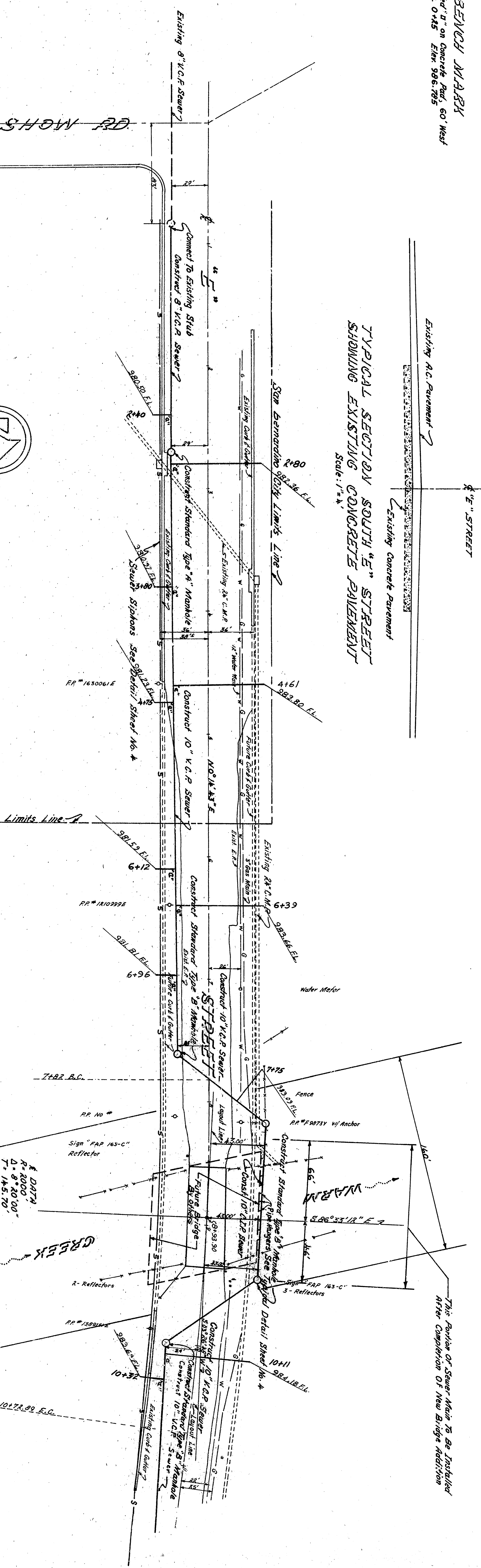
GENERAL NOTES

1. All work indicated on these plans shall be done in conformity with special provisions No. 1507 & 1508.
2. All work shall be done in accordance with the City Specifications for Sewerage and Drainage No. 3347 on file in the Office of the City Engineer.
3. All house connections shall be made in accordance with the City Specifications for Sewerage and Drainage No. 3347 on file in the Office of the City Engineer.
4. All house connections are approximate and actual locations shall be determined in the field by the City Engineer.
5. No more than 4.500 level feet of height shall be given of any line.
6. Open French drains shall be constructed as indicated on these plans.
7. All sewer connections are approximate and actual locations shall be determined in the field by the City Engineer.
8. No more than 4.500 level feet of height shall be given of any line.
9. Sewer mains shall be constructed of either "Wedge-Load" or "Speed-Seal" Sewer (as shown) shall be constructed of "Wedge-Load" or "Speed-Seal" (as shown) pipe.
10. Sewer (as shown) shall be constructed of "Wedge-Load" or "Speed-Seal" (as shown) pipe.

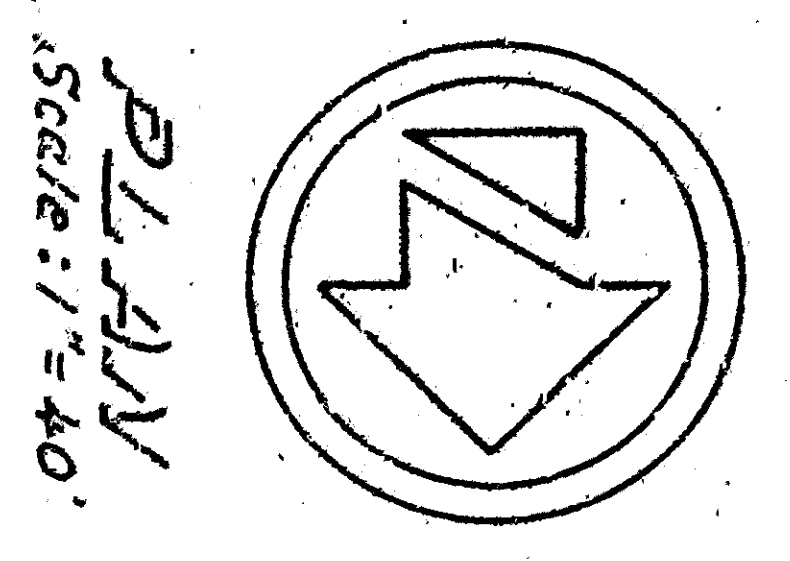


PROFILE
Scale: 1" = 4'

TYPICAL SECTION SOUTH "E" STREET SHOWING EXISTING CONCRETE PAVEMENT
Scale: 1" = 4'



BENCH MARK
Checked on concrete Pad, 60' West of Orange Show Rd. Elev. 986.193



PLAN
Scale: 1" = 40'

PROJECT NO.	254-23	REVISION	1954
DRAWING NO.	3381	CITY ENGINEER	F. L. HALL
CHECKED BY	DEAN	REGISTERED CIVIL ENGINEER NO.	15822
SHEET / OF	1 / 2	CITY OF SAN BERNARDINO	DEPARTMENT OF ENGINEERING
RECOMMENDED BY	DEAN	SEWER	SOUTH "E" STREET
		ORANGE SHOW RD TO WALL STREET	